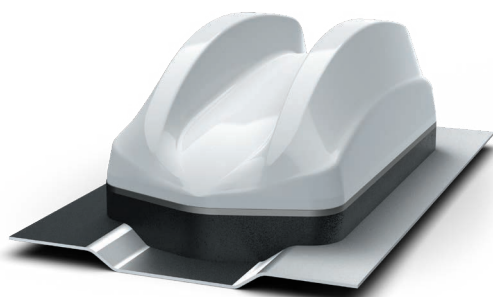
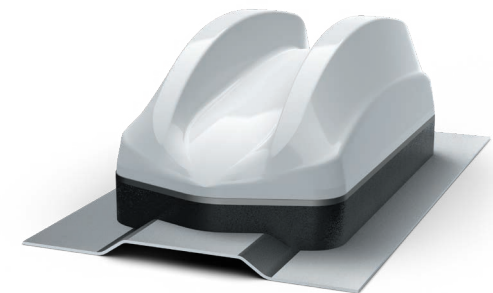


Ribbed Roof mounting kit for GPSD4 Dual Sharkee

SAB-312



SAB-312

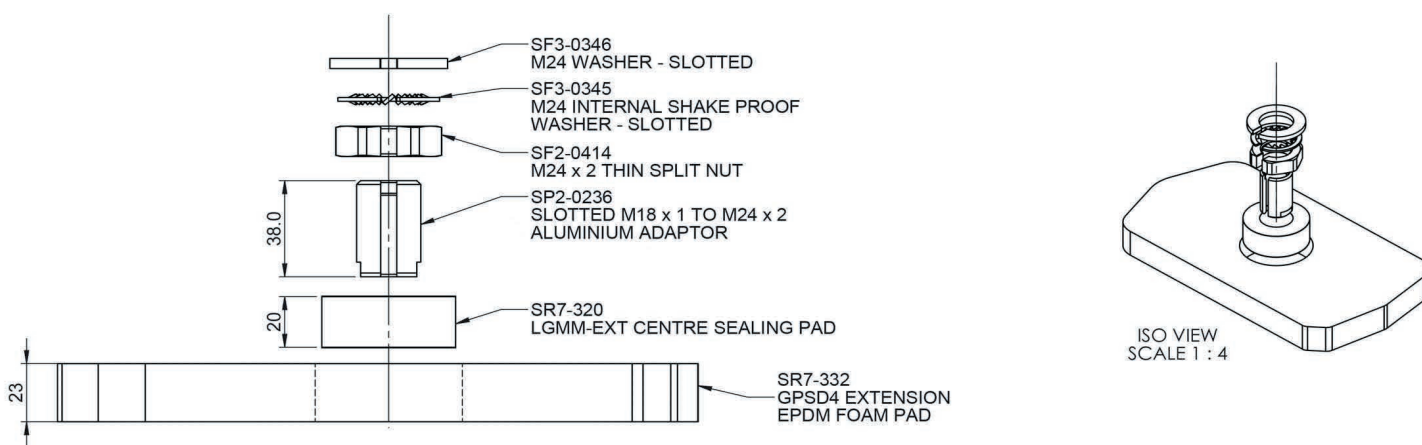
- Mounting kit for ribbed or curved/uneven mounting panels
- Allows fitment on SUV's and Panel Vans

For use with the GPSD4/SHKG4 Dual Sharkee antenna series, SAB-312 provides a neat mounting solution for ribbed roof panels commonly found on SUV's and LCV's, but it is equally suitable for use on curved/uneven roof panels. The kit includes a slotted mounting bush extender, nut, washer, semi closed cell outer EPDM foam pad and closed cell silicone inner foam pad.

Once the antenna and pads are correctly fitted and the correct level of compression is achieved, the pad will seal the mounting hole and mould to the contours of the mounting surface presenting a pleasant aesthetic finish. The slotted mounting bush, nut and washers allows passage of larger connectors such as FAKRA through the extender tube.

Technical Drawing

SAB-312



Product Data

Part No.

SAB-312

Mechanical Data

Compression required to seal (mm)	3mm (0.12") of inner foam pad or until hard stop
Max panel variation/rib height (mm)	Max 20mm (0.8") mounting depth inclusive of panel and rib height, panel material must not exceed 10mm (0.4")
Mounting hole size (mm)	25 (1.0")
Material (Inner sealing pad)	Closed Cell Silicone Foam
Colour	White
Material (outer pad)	Semi Closed Cell EPDM Foam
Colour	Black