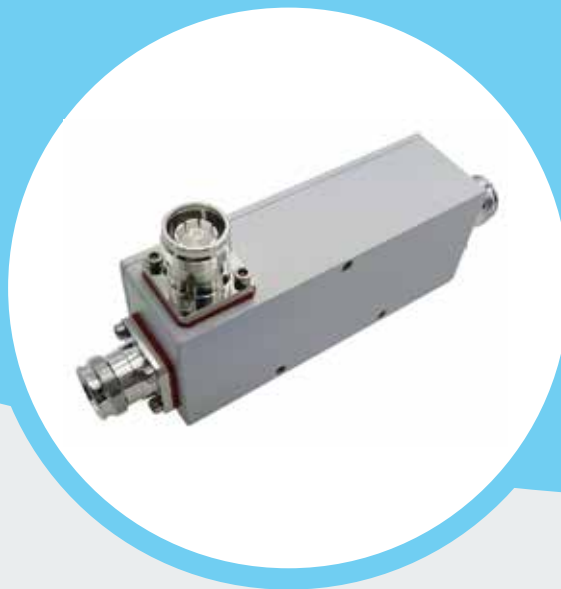


# PRODUCT DATASHEET

## Directional Coupler

(698-3800 MHz, 300W, 4.3-10 F, IP65,-155dBc)



### Product Features:

- Wide Frequency Band 698-3800MHz
- 2G/3G/4G/LTE/5G Coverage
- Low Passive Inter-modulation
- Low VSWR & Insertion Loss
- High Isolation, Indoor & Outdoor IP65
- Widely used for In-Building Solutions

### Technical & Mechanical Specifications:

Model No.	MDC-738-03-4F-155	MDC-738-05-4F-155 MDC-738-06-4F-155	MDC-738-07-4F-155 MDC-738-08-4F-155	MDC-738-10-4F-155 MDC-738-12-4F-155	MDC-738-13-4F-155 MDC-738-15-4F-155	MDC-738-20-4F-155	MDC-738-30-4F-155 MDC-738-40-4F-155
Frequency (MHz)	698-3800						
Coupling (dB)	3	5/6	7/8	10/ 12	13/ 15	20	30/40
IL(dB)	≤3.9	≤2. 1/≤1.85	≤1.8/≤1.7	≤1. 1/≤1.0	≤0.9/≤0.7	≤0.7	≤0.6/≤0.6
Accuracy(dB)	± 1.0	± 1.0/±1.0	± 1.0/±1.0	±1.2/±1.2	±1.3/±1.3	±1.4	±1.7/±1.7
Isolation(dB)	≥18	≥20/≥21	≥22/≥23	≥25/≥27	≥28/ ≥30	≥35	≥43/≥53
VSWR	≤1.35						
PIM(dBc)	≤ -155dBc@2*43dBm (698-2700MHz)						
Power(W)	300 (Average)						
Impedance	50 ohm						
Connector	3*4.3- 10 Female						
Color	Light grey						
Temp(deg)	-35~+65						
Application	Indoor & Outdoor IP65						
Humidity	5%-95%						
Dimensions	170*72*36mm (Connectors Included)						

### Mechanical Drawing:

